

Working with Diabetes UK

What is this guide for?

Local groups are integral to Diabetes UK and this guide is designed to provide you with information on how to get the best out of being part of the organisation. It provides information on from giving you information on where to find the resources we have available and the details of the key members of the Diabetes UK team you will work with on a regular basis.

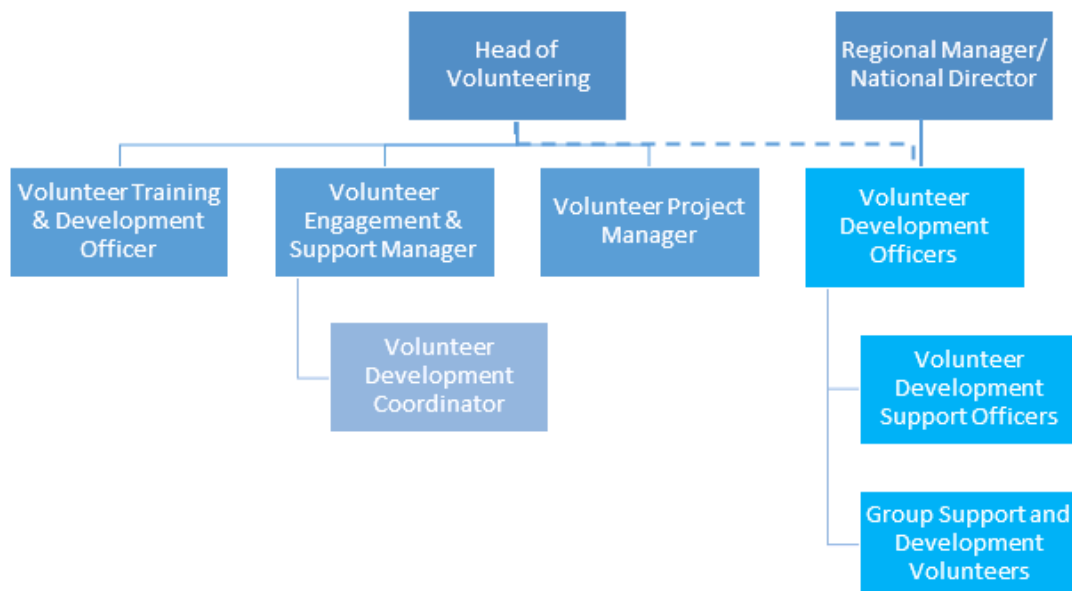
Finding the Resources you need

Working with Diabetes UK gives you access to a wide variety of resources designed to assist you in promoting and running your group. These can all be found on our online portal which you can access by clicking on the link below.

<http://www.diabetes.org.uk/Local-Groups-Portal/>

Please take some time to explore our portal and make use of the resources we have placed on there for you. If you need hard copies of resources please contact your local office

Who's Who in the Volunteering Team



Local Volunteer Staff

Being part of Diabetes UK will provide you with access to a fantastic support network, which will help ensure that your group reaches its full potential.

The **main point of contact** for all your questions and queries is your local volunteering team. They are happy to provide you with support and information on running your group.

The team comprises of:

Volunteer Development Officer (VDO)

The VDO gives direct support to Groups within their region/nation. They provide advice to local groups to ensure the group runs effectively. They can also provide information on running meetings, accessing resources, and act as the main point of contact for queries.

Volunteer Development Support Officer (VDSO)

The VDSO supports the VDO in working with volunteers in the region/nation. They undertake a variety of activities to support groups. This varies in each region but can involve delivering training and coordinating mailings.

Group Support and Development Volunteer (GSDV)

GSDVs are trained by Diabetes UK to help local groups reach and support more people living with diabetes by:

- Working with each group to provide support with the writing of a personalised development plan. This plan can help you to identify how you can reach and attract more people to your group.
- Supporting groups by providing help and advice on volunteer recruitment and selection. This may include building new volunteer roles to support the growth of the group.

Please contact your local VDO/VDSO for more information or to see if there is a GSDV that covers your area.

Regional Fundraisers

Regional Fundraisers can work with local groups who wish to fundraise for Diabetes UK by providing advice, support and materials for fundraising activities. Please contact your VDO/VDSO to discuss your group's needs regarding fundraising.

Staff in the Central Volunteering Team

Whilst your local volunteering team should be your first point of contact, Diabetes UK has a Central Volunteering Team, based in our Central Office in Camden, London. They develop resources and procedures to support groups to work effectively. They are a key source of information on group banking and financial queries, setting up your group website and organising mailings to Diabetes UK members.

Safeguarding Team

The Safeguarding Team is responsible for developing policies and procedures surrounding the safeguarding of children and vulnerable adults. They can provide guidance on safeguarding issues. For more information and their contacts please see the Safeguarding section of the *Local Groups Portal*

Volunteering Team Contact Details

<p>Diabetes UK- Central Team Tel: 020 7424 1174 Email: volunteering@diabetes.org.uk</p>	<p>Diabetes UK Midlands (West) Tel: 01922 614500 Email: Westmidsvdo@diabetes.org.uk</p>
<p>Diabetes UK Cymru Tel: 029 2066 8276 Email: Wales_Volunteering@diabetes.org.uk</p>	<p>Diabetes UK North West Tel: 01925 653281 Email: n.westvolunteering@diabetes.org.uk</p>
<p>Diabetes UK Northern Ireland Tel: 028 9066 6646 Email: n.ireland@diabetes.org.uk</p>	<p>Diabetes UK Northern & Yorkshire Tel: 01325 488606 Email: northyorks@diabetes.org.uk</p>
<p>Diabetes UK Scotland Tel: 01412 456380 Email: scotland@diabetes.org.uk</p>	<p>Diabetes UK South East Tel: 01372 720148 Email: south.east@diabetes.org.uk</p>
<p>Diabetes UK London Tel: 020 7424 1116 Email: london@diabetes.org.uk</p>	<p>Diabetes UK Eastern Tel: 01376 501390 Email: eastern@diabetes.org.uk</p>
<p>Diabetes UK South West Tel: 01823 448260 Email: south.west@diabetes.org.uk</p>	<p>Diabetes UK Midlands (East) Tel: 01922 614500 Email: midlands@diabetes.org.uk</p>